

JAG1 Antibody
Rabbit mAb
Catalog # AP90729**Specification**

JAG1 Antibody - Product InformationApplication
Primary Accession
Reactivity
Clonality**WB, IHC**
[P78504](#)
Rat
Monoclonal**Other Names**

JAG1; AGS; AHD; Alagille syndrome; CD339 antigen; HJ1; Jagged1; JAGL1; Jagged; Jagged 1; Protein jagged-1; AWS; CD339; Soluble protein jagged;

Isotype
Host
Calculated MW**Rabbit IgG**
Rabbit
133799 Da**JAG1 Antibody - Additional Information**

Dilution

WB~~1:1000
IHC~~1:100~500Purification
Immunogen**Affinity-chromatography**
A synthesized peptide derived from human JAG1

Description

Ligand for multiple Notch receptors and involved in the mediation of Notch signaling. May be involved in cell-fate decisions during hematopoiesis. Seems to be involved in early and late stages of mammalian cardiovascular development. Inhibits myoblast differentiation (By similarity). Enhances fibroblast growth factor-induced angiogenesis (in vitro). Rabbit IgG in phosphate buffered saline , pH 7.4, 150mM NaCl, 0.02% sodium azide and 50% glycerol. Store at +4°C short term. Store at -20°C long term. Avoid freeze / thaw cycle.

Storage Condition and Buffer

JAG1 Antibody - Protein Information**Name** JAG1**Synonyms** JAGL1**Function**

Ligand for multiple Notch receptors and involved in the mediation of Notch signaling (PubMed:18660822, PubMed:<a

[20437614](http://www.uniprot.org/citations/20437614)). May be involved in cell-fate decisions during hematopoiesis (PubMed: [9462510](http://www.uniprot.org/citations/9462510)). Seems to be involved in early and late stages of mammalian cardiovascular development. Inhibits myoblast differentiation (By similarity). Enhances fibroblast growth factor-induced angiogenesis (in vitro).

Cellular Location

Membrane; Single-pass type I membrane protein. Cell membrane

Tissue Location

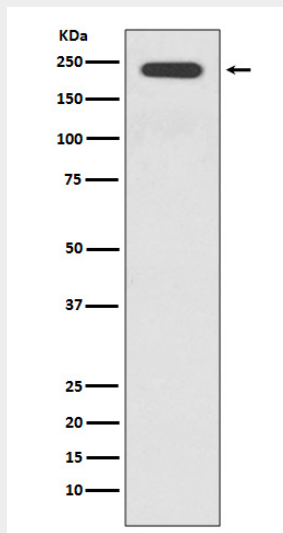
Widely expressed in adult and fetal tissues. In cervix epithelium expressed in undifferentiated subcolumnar reserve cells and squamous metaplasia. Expression is up-regulated in cervical squamous cell carcinoma. Expressed in bone marrow cell line HS-27a which supports the long-term maintenance of immature progenitor cells

JAG1 Antibody - Protocols

Provided below are standard protocols that you may find useful for product applications.

- [Western Blot](#)
- [Blocking Peptides](#)
- [Dot Blot](#)
- [Immunohistochemistry](#)
- [Immunofluorescence](#)
- [Immunoprecipitation](#)
- [Flow Cytometry](#)
- [Cell Culture](#)

JAG1 Antibody - Images



Western blot analysis of JAG1 expression in HepG2 cell lysate.